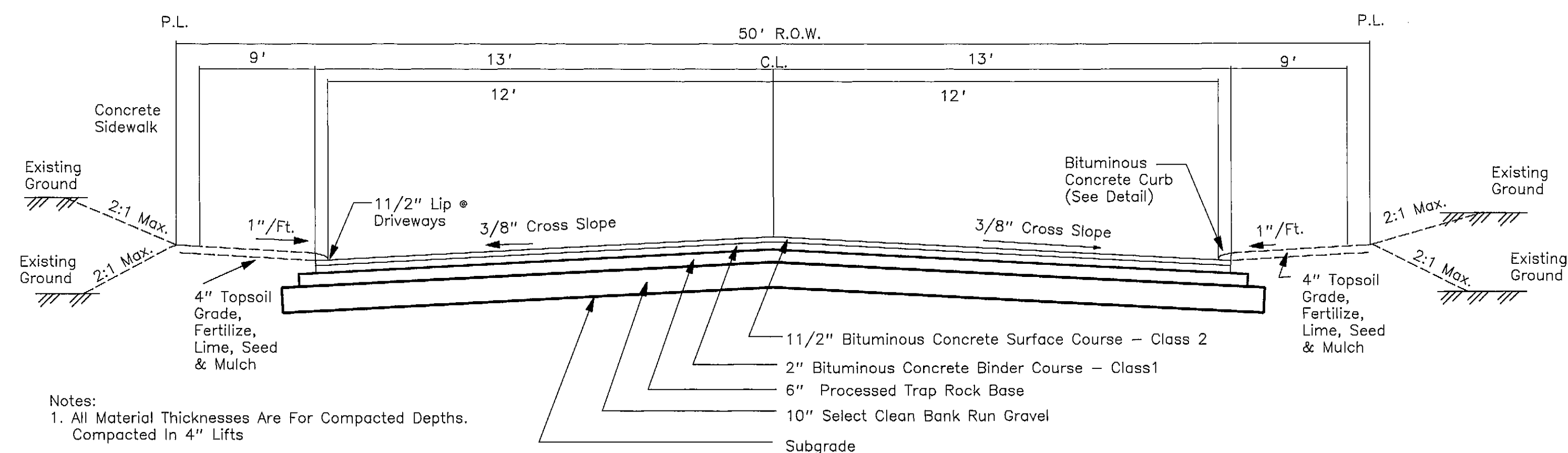


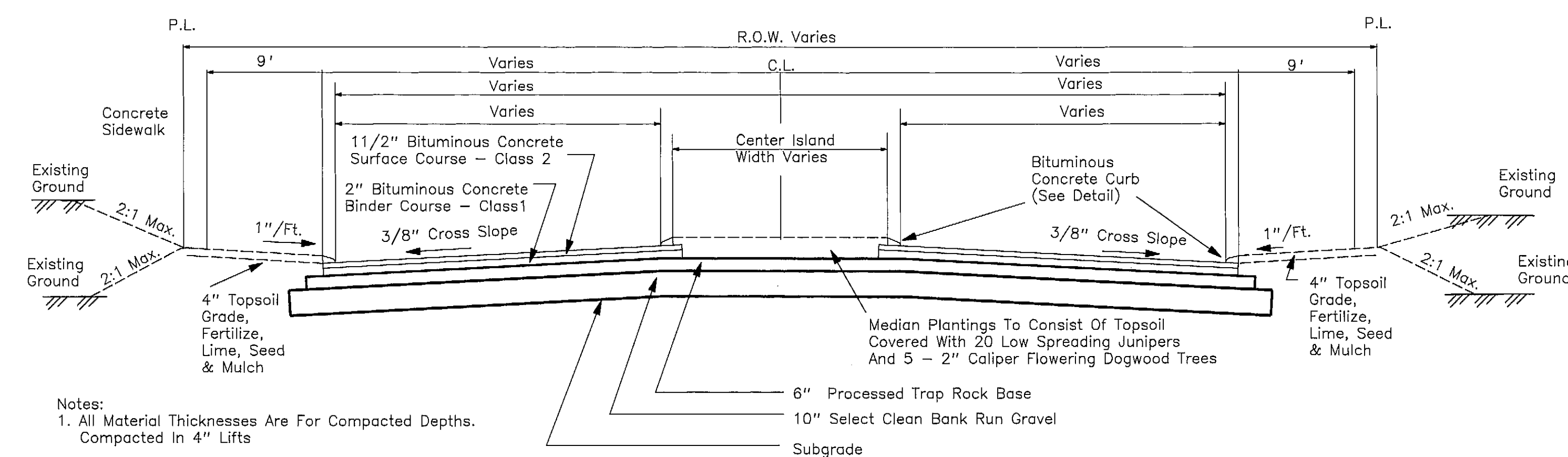
TYPICAL ROAD CROSS SECTION W/UTILITIES

Not To Scale



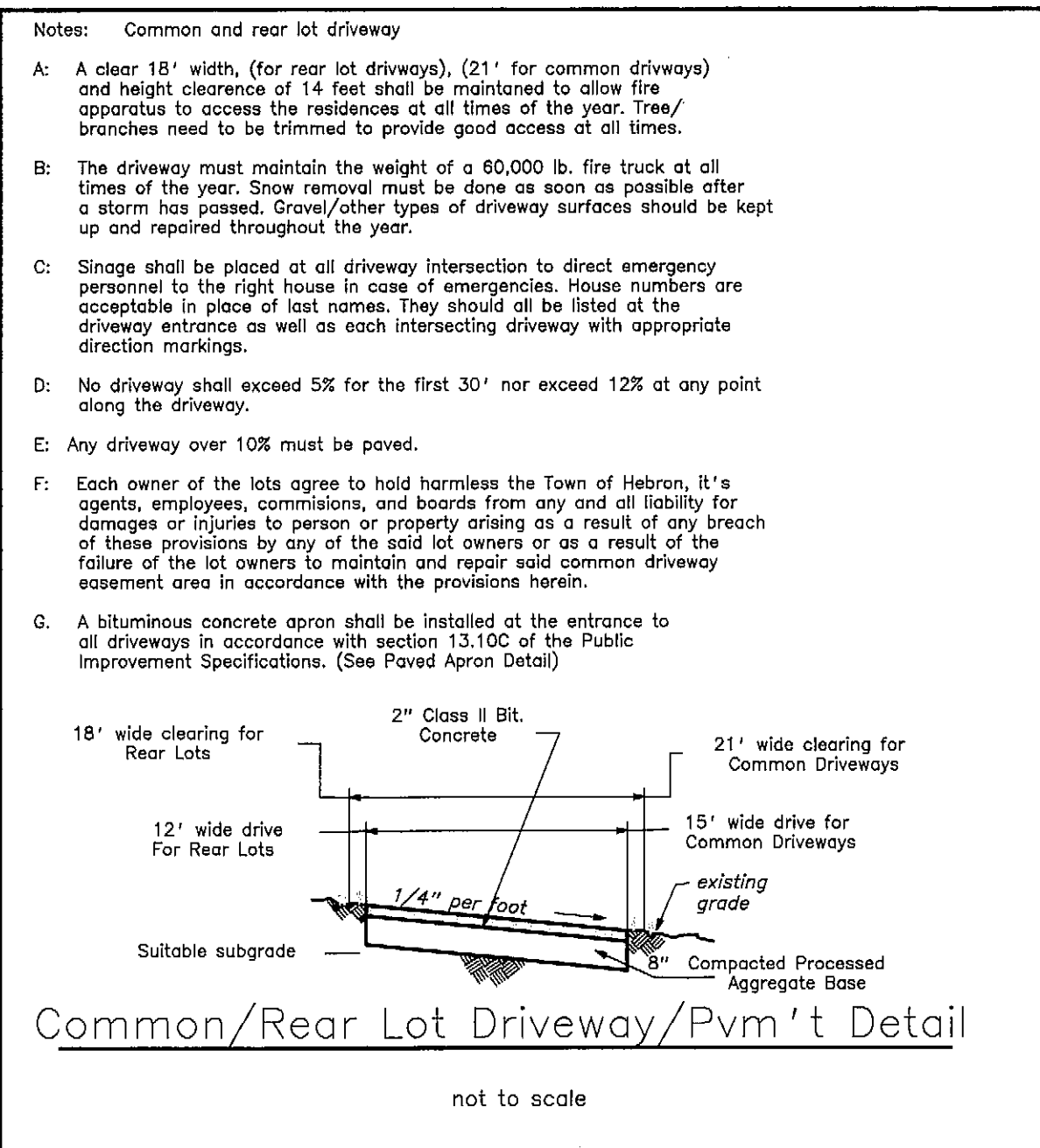
ROAD SECTION SPRING HILL LANE & STERLING WAY

Not To Scale



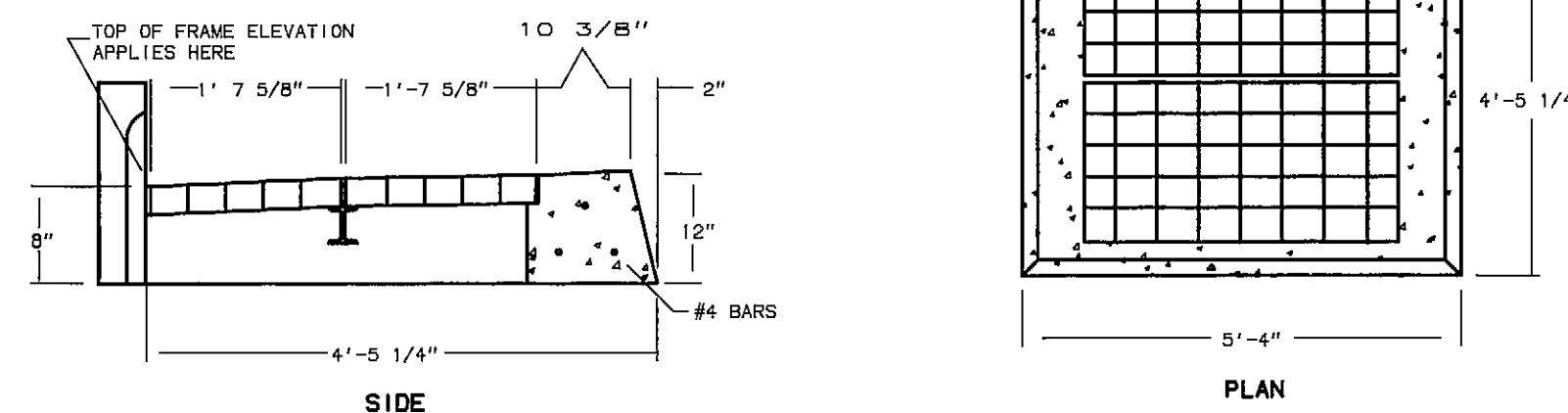
ROAD SECTION AT MEDIAN ISLAND SPRING HILL LANE

Not To Scale



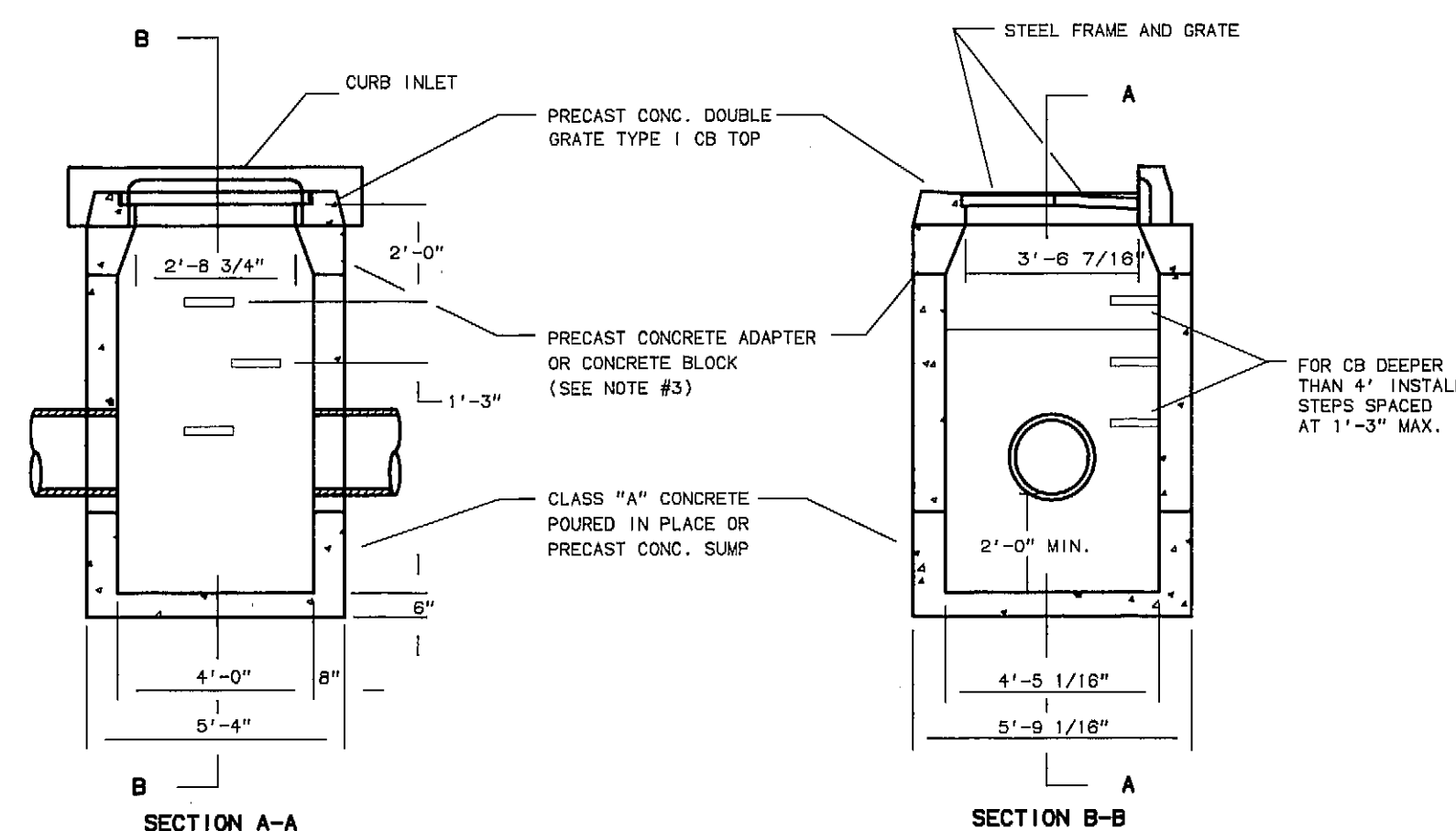
Common/Rear Lot Driveway/Pvm't Detail

not to scale



TYPE "C" CATCH BASIN DOUBLE GRATE TYPE I

Not To Scale

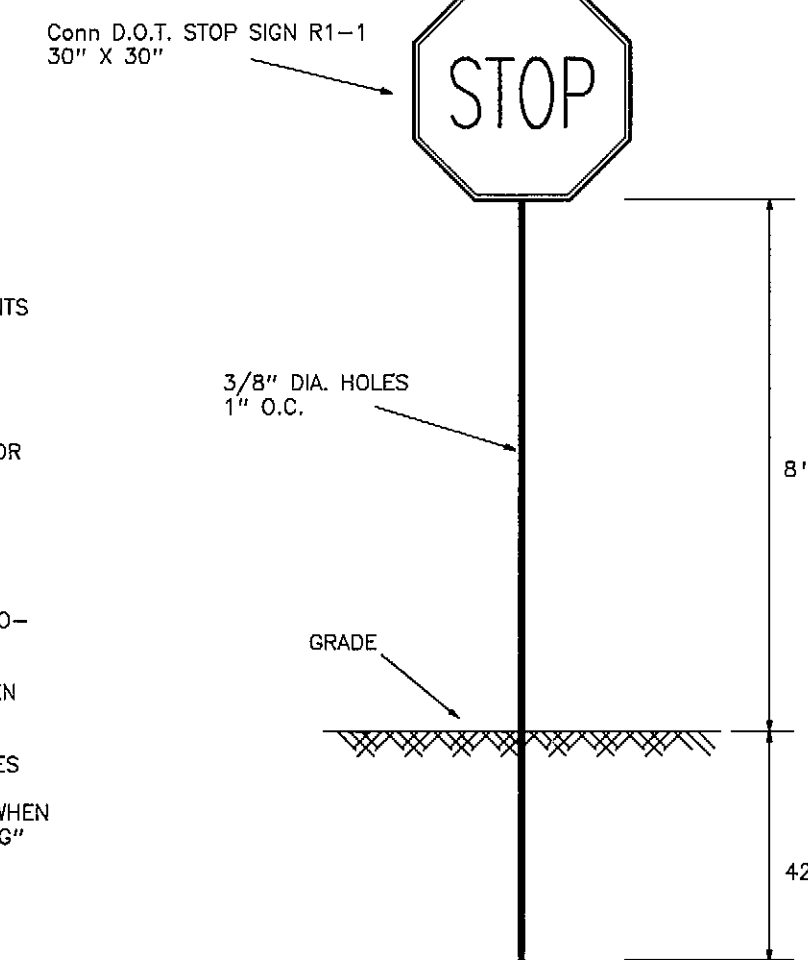


NOTES:

1. WALLS - CONC. BLOCK OR PRECAST SECTIONS.
2. WALL THICKNESS TO BE 12" WHEN TOTAL HEIGHT OF STRUCTURE EXCEEDS 10' FROM T.F. TO BOTTOM OF BASE.
3. WHEN CONC. BLOCKS USED, MAX. CORSEL OF 2" PER COURSE OF BLOCK.

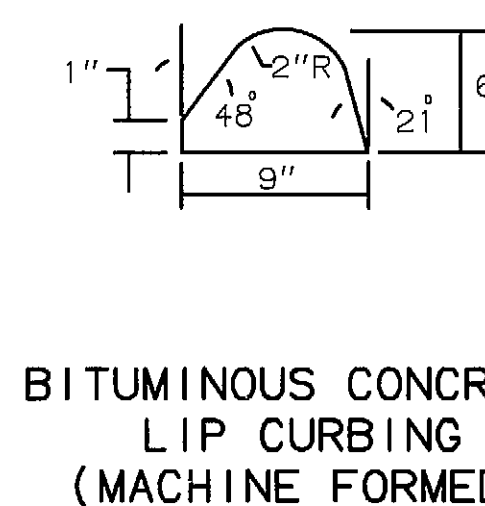
TYPE "C" CATCH BASIN DOUBLE GRATE TYPE I

Not To Scale



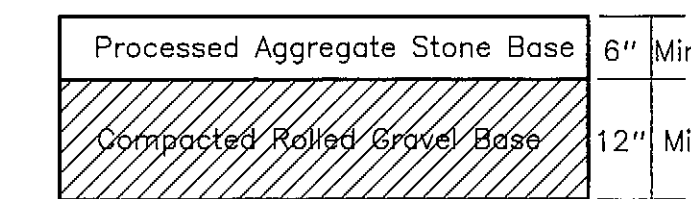
STOP AND STREET SIGN DETAIL

NOT TO SCALE



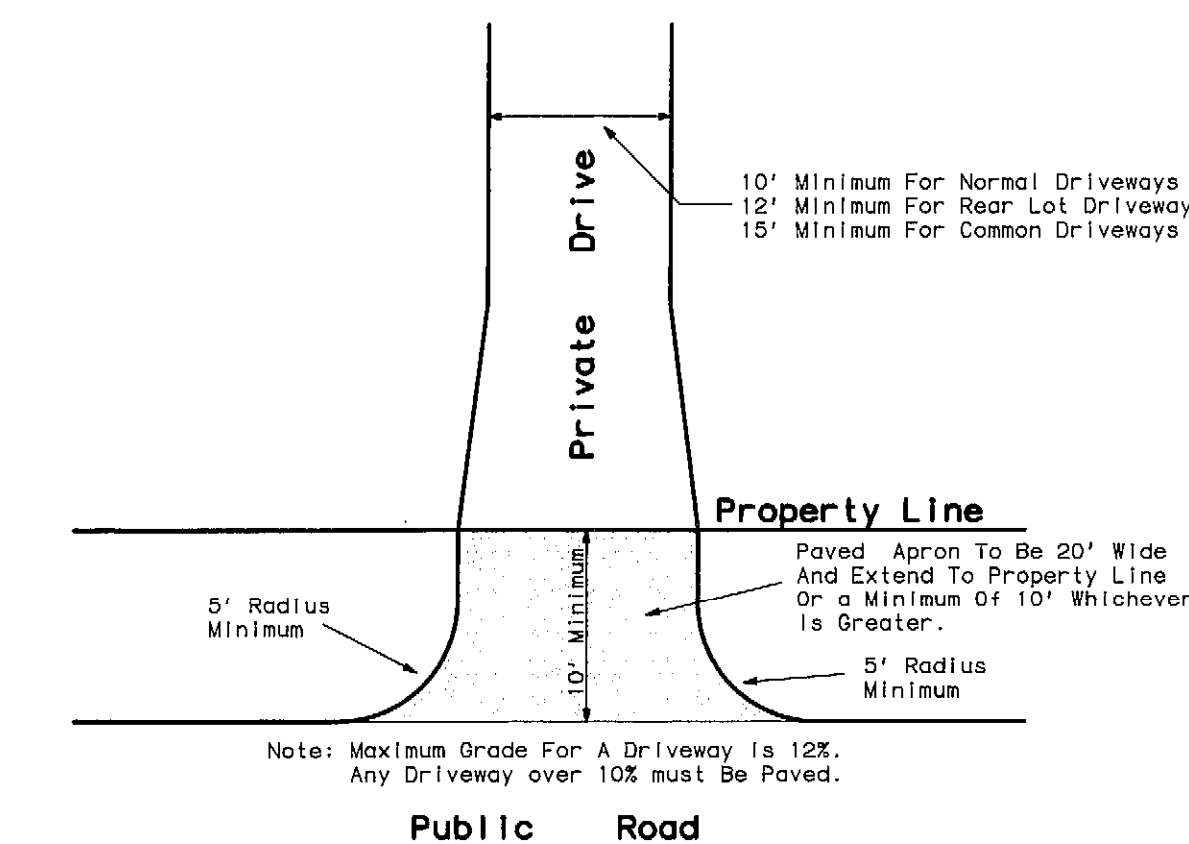
BITUMINOUS CONCRETE LIP CURBING (MACHINE FORMED)

Not To Scale



CROSS SECTION MAINTENANCE ACCESS DRIVE

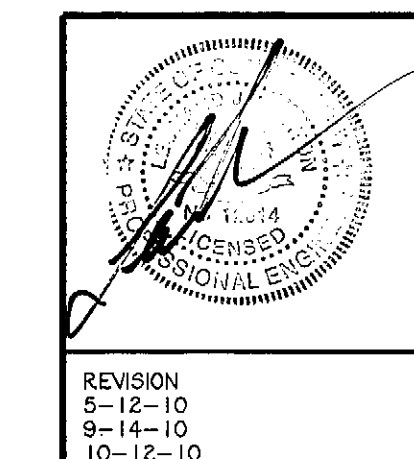
Not To Scale



PAVED APRON DETAIL

NOT TO SCALE

THIS MAP PRODUCED BY ORIGINAL INK DRAWING ON POLY FILM
TARBELL, HEINTZ & ASSOC.
1227 BURNSIDE AVE - SUITE 31
EAST HARTFORD CT 06108



"LAKEWOOD ESTATES"				
NOTES & DETAILS				
PREPARED FOR JAMES GROSSMAN				
LAKE ROAD, HILLCREST DRIVE, & RTE #85 HEBRON, CONNECTICUT				
TARBELL, HEINTZ & ASSOC., INC. CIVIL ENGINEERS - LAND SURVEYORS				
1227 BURNSIDE AVE., SUITE 31 EAST HARTFORD, CT (860) 526-1810				
JOB NO.	DATE:	SCALE:	DRAWN BY:	SHEET NO.:
1091	12-03-07	AS NOTED	E.M.W.	34 OF 39