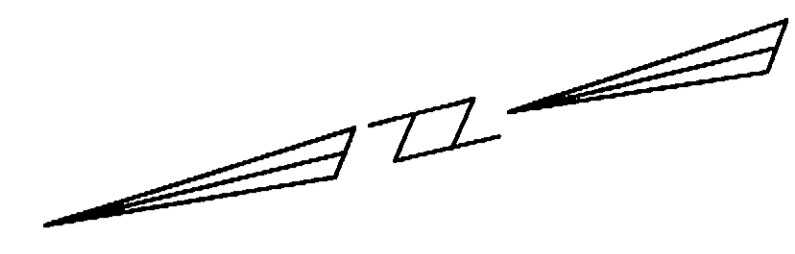
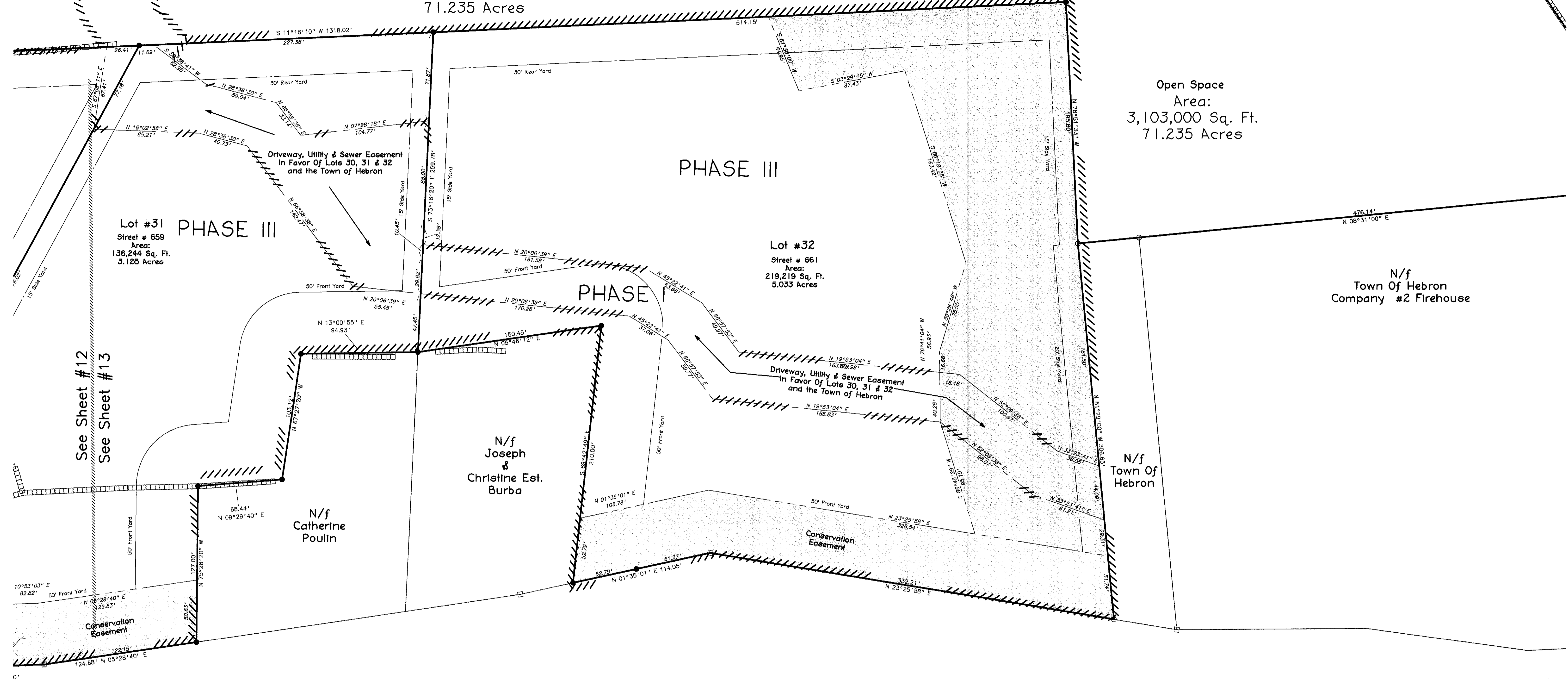


Muri & Seym Osirc



Open Space
Area:
3,103,000 Sq. Ft.
71.235 Acres

Open Space
Area:
3,103,000 Sq. Ft.
71.235 Acres

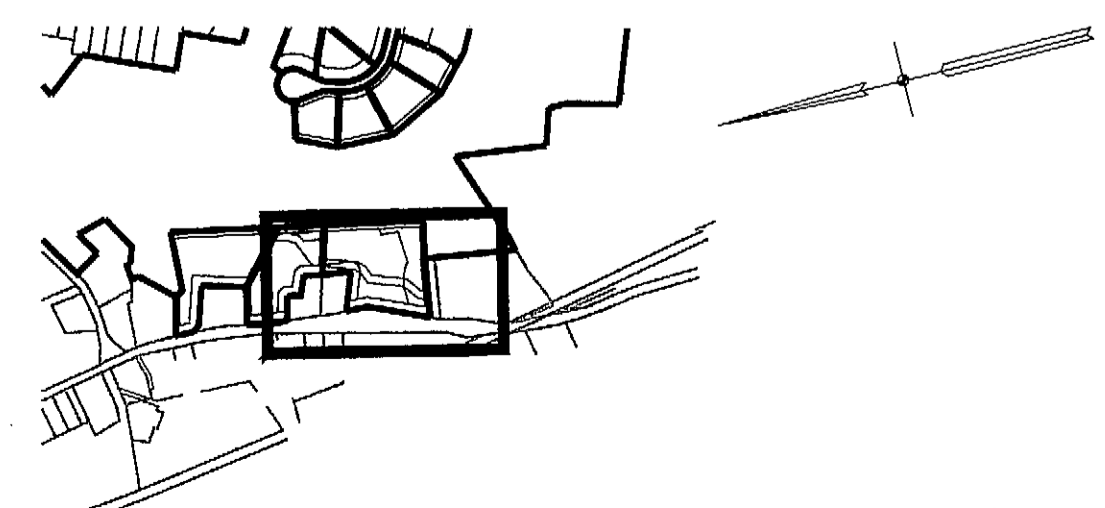
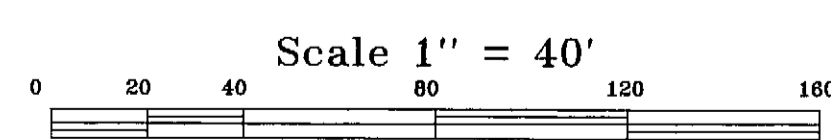


See Sheet #12
See Sheet #13

Church Street aka Conn. Route #85

N/f
NRLL East LLC

N/f
The Amston
Lake Company



Sheet Index Map
1" = 1,000'

All Lots Containing Stone Walls
To Have 5' Conservation Easements
Along Said Walls

NOTE: THIS SURVEY AND MAP HAS BEEN PREPARED IN ACCORDANCE WITH SECTIONS 20-300b-1 THRU 20-300b-20 OF THE REGULATIONS OF CONNECTICUT STATE AGENCIES - "MINIMUM STANDARDS FOR SURVEYS AND MAPS IN THE STATE OF CONNECTICUT" AS ENDORSED BY THE CONNECTICUT ASSOCIATION OF LAND SURVEYORS, INC. IT IS A SUBDIVISION SURVEY BASED ON A DEPENDENT RESURVEY, CONFORMING TO HORIZONTAL ACCURACY CLASS "A-2", VERTICAL ACCURACY CLASS "T-3" AND INTENDED TO BE USED FOR SUBDIVISION APPROVAL.

TO MY KNOWLEDGE AND BELIEF, THIS MAP IS SUBSTANTIALLY CORRECT AS NOTED HEREON.

MICHAEL L. TARBELL
L.S. 15466
REGISTRATION NO.
12-03-07
DATE

See Sheet #7 For Legend

"LAKEWOOD ESTATES"

RECORD SUBDIVISION MAP

PREPARED FOR
JAMES GROSSMAN
LAKE ROAD, HILLCREST DRIVE, & RTE #85
HEBRON, CONNECTICUT

TARBELL, HEINTZ & ASSOC., INC.
CIVIL ENGINEERS - LAND SURVEYORS
1227 BURNSIDE AVE. SUITE 31, EAST HARTFORD, CT (860) 528-1810



REVISION:
4-6-09
5-12-10
9-14-10
10-12-10

JOB NO. 1091	DATE 12-03-07	SCALE 1" = 40'	DRAWN BY M.L.T./E.M.W.	SHEET NO. 13 OF 39
-----------------	------------------	-------------------	---------------------------	-----------------------

THIS MAP PRODUCED BY ORIGINAL INK DRAWING ON POLY FILM
TARBELL, HEINTZ & ASSOC.
1227 BURNSIDE AVE. - SUITE 31
EAST HARTFORD CT 06108