

See Sheet #7
See Sheet #11

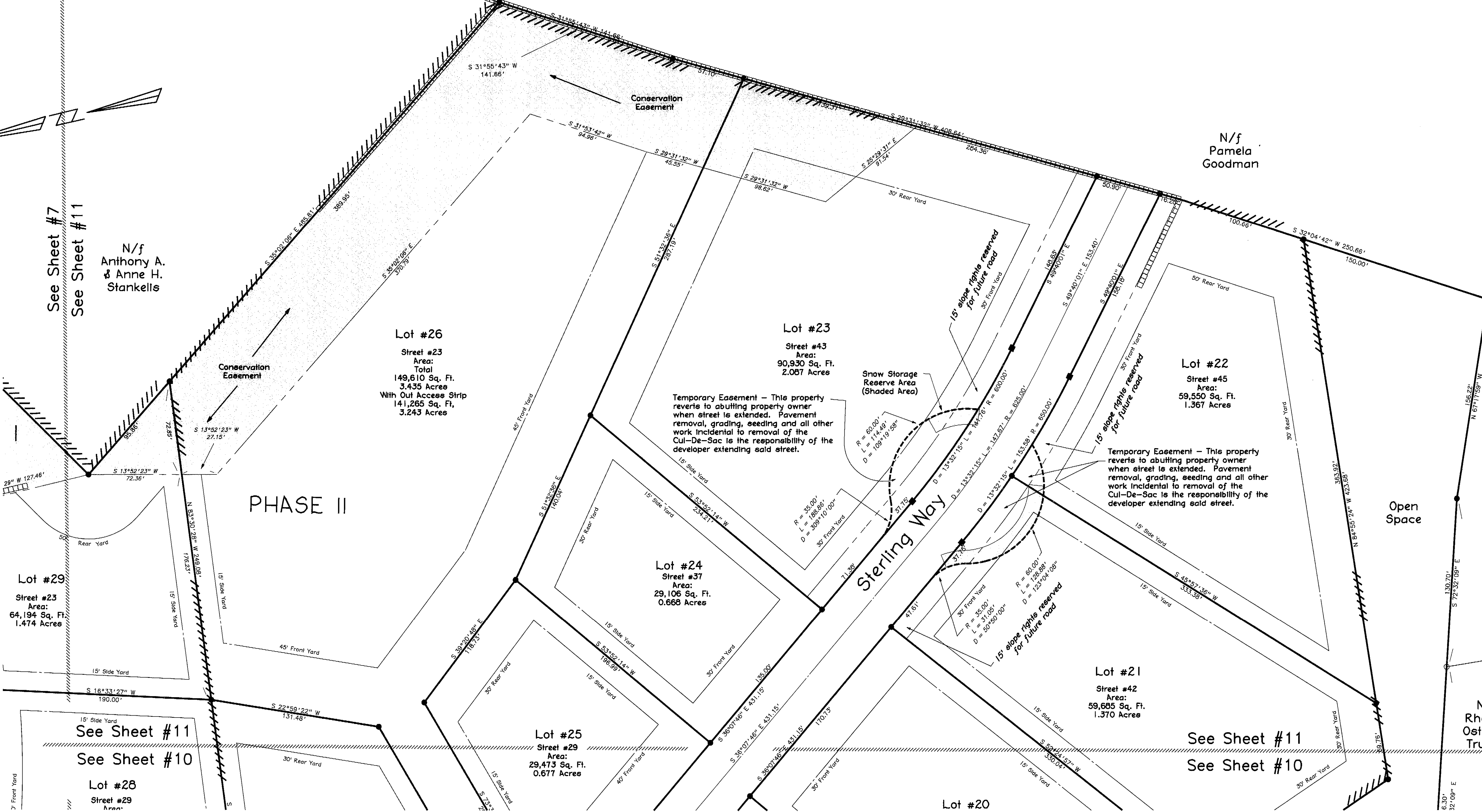
N/f
Anthony A.
& Anne H.
Stankells

N/f
Pamela
Goodman

N/f
Pamela
Goodman

N/f
Murray
&
Seymour
Ostrager

N/f
Rhonda
Ostrager
Trustee



PHASE II

Lot #26
Street #23
Area:
Total
149,610 Sq. Ft.
3.435 Acres
With Out Access Strip
141,265 Sq. Ft.
3.243 Acres

Lot #23
Street #43
Area:
90,930 Sq. Ft.
2.087 Acres

Lot #22
Street #45
Area:
59,550 Sq. Ft.
1.367 Acres

Lot #29
Street #23
Area:
64,194 Sq. Ft.
1.474 Acres

Lot #24
Street #37
Area:
29,106 Sq. Ft.
0.668 Acres

Lot #21
Street #42
Area:
59,665 Sq. Ft.
1.370 Acres

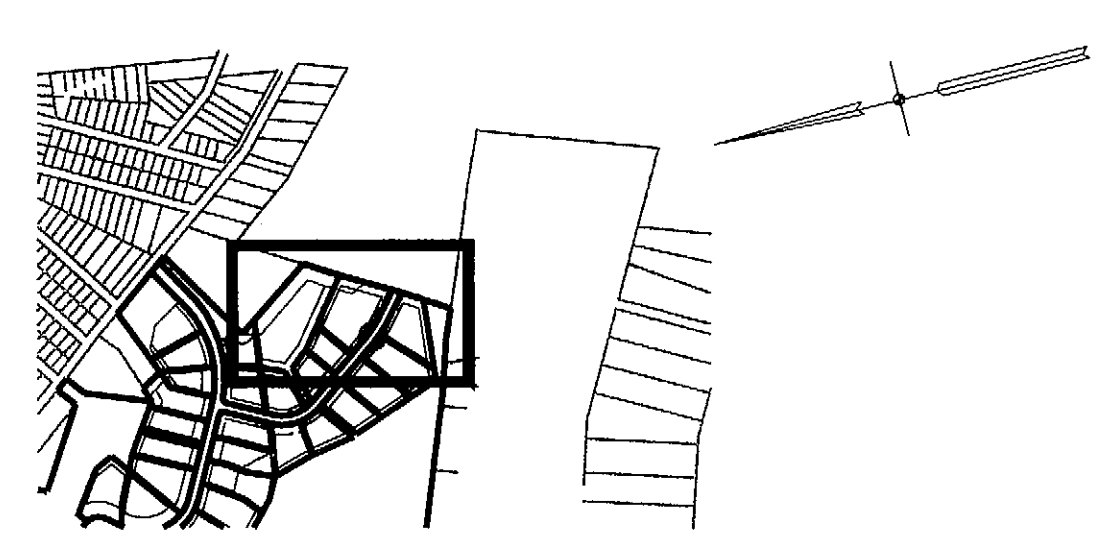
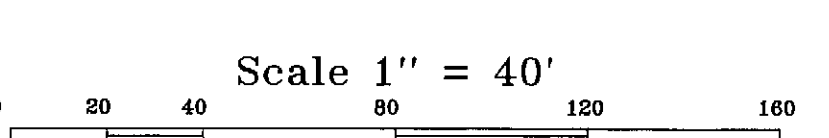
See Sheet #11
See Sheet #10

Lot #28
Street #29

Lot #25
Street #29
Area:
29,473 Sq. Ft.
0.677 Acres

See Sheet #11
See Sheet #10

Lot #20

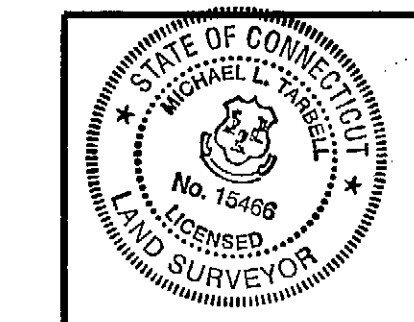


Sheet Index Map
1" = 1,000'

All Lots Containing Stone Walls
To Have 5' Conservation Easements
Along Said Walls

NOTE: THIS SURVEY AND MAP HAS BEEN PREPARED IN ACCORDANCE WITH SECTIONS 20-300b-1 THRU 20-300b-20 OF THE REGULATIONS OF CONNECTICUT STATE AGENCIES - "MINIMUM STANDARDS FOR SURVEYS AND MAPS IN THE STATE OF CONNECTICUT" AS ENDORSED BY THE CONNECTICUT ASSOCIATION OF LAND SURVEYORS, INC. IT IS A SUBDIVISION SURVEY BASED ON A DEPENDENT RESURVEY, CONFORMING TO HORIZONTAL ACCURACY CLASS "A-2", VERTICAL ACCURACY CLASS "T-3" AND INTENDED TO BE USED FOR SUBDIVISION APPROVAL.

TO MY KNOWLEDGE AND BELIEF, THIS MAP IS SUBSTANTIALLY CORRECT AS NOTED HEREON.
MICHAEL L. TARBELL L.S. 15466 12-03-07
REGISTRATION NO. DATE



See Sheet #7 For Legend

"LAKEWOOD ESTATES"
RECORD SUBDIVISION MAP
PREPARED FOR
JAMES GROSSMAN
LAKE ROAD, HILLCREST DRIVE, & RTE #85
HEBRON, CONNECTICUT

TARBELL, HEINTZ & ASSOC., INC.
CIVIL ENGINEERS - LAND SURVEYORS
1227 BURNSIDE AVE. SUITE 31, EAST HARTFORD, CT (860) 526-1810

JOB NO.	DATE	SCALE	DRAWN BY	SHEET NO.
1091	12-03-07	1" = 40'	M.L.T./E.M.W.	11 OF 39

THIS MAP PRODUCED BY
ORIGINAL SURVEYING CO.
POLY FILM
TARBELL, HEINTZ & ASSOC.
1227 BURNSIDE AVE. SUITE 31
EAST HARTFORD CT 06108