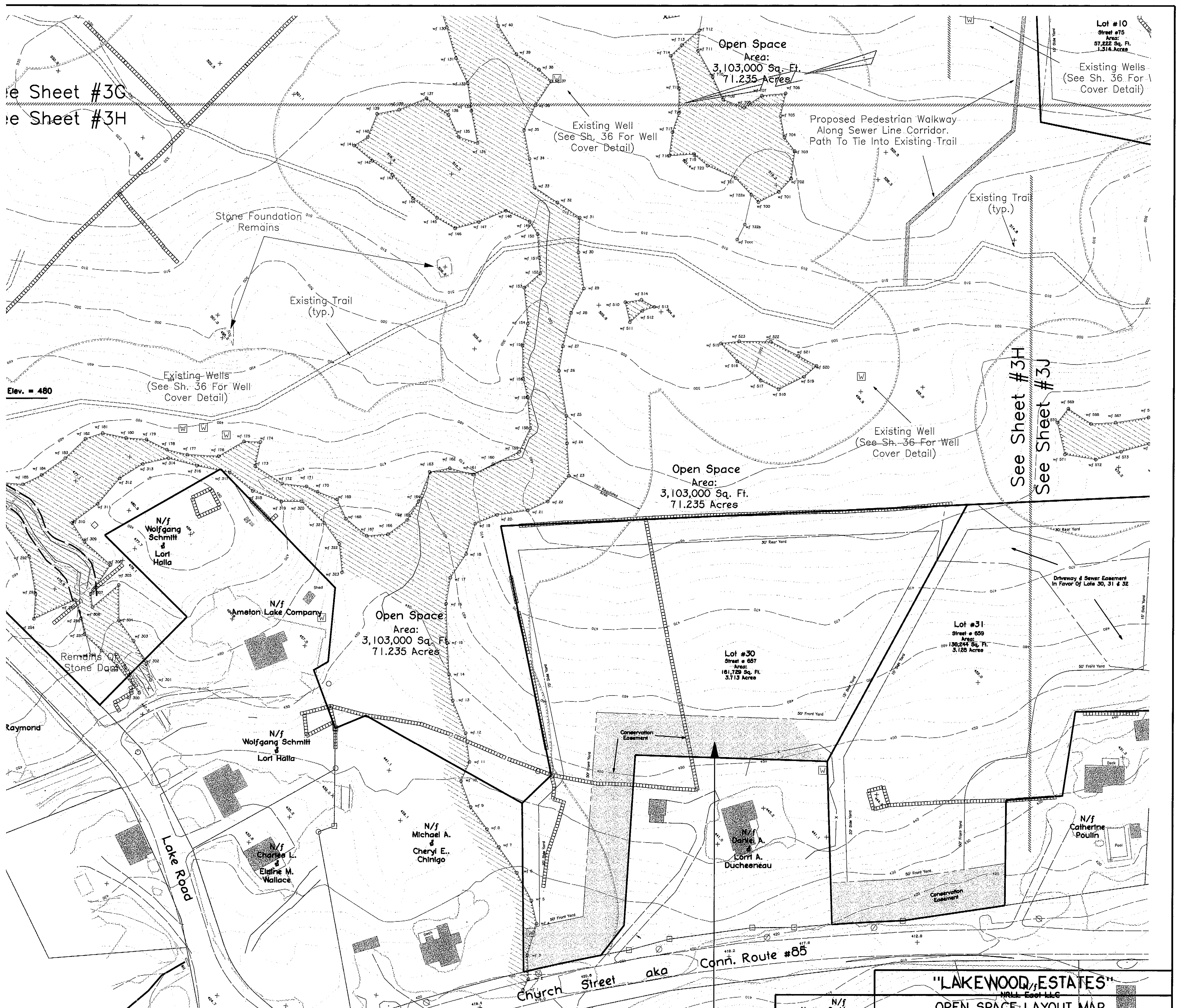


See Sheet #3G  
See Sheet #3H

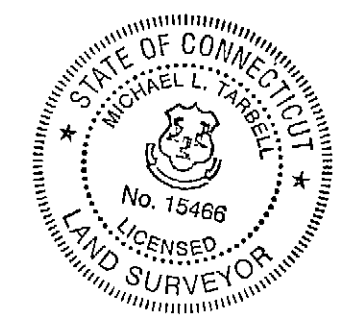


Elev. = 480

See Sheet #3H  
See Sheet #3J

NOTE: THIS SURVEY AND MAP HAS BEEN PREPARED IN ACCORDANCE WITH SECTIONS 20-300b-1 THRU 20-300b-20 OF THE REGULATIONS OF CONNECTICUT STATE AGENCIES - "MINIMUM STANDARDS FOR SURVEYS AND MAPS IN THE STATE OF CONNECTICUT" AS ENDORSED BY THE CONNECTICUT ASSOCIATION OF LAND SURVEYORS, INC. IT IS A SUBDIVISION SURVEY BASED ON A DEPENDENT RESURVEY, CONFORMING TO HORIZONTAL ACCURACY CLASS "A-2", VERTICAL ACCURACY CLASS "1-3", AND INTENDED TO BE USED FOR SUBDIVISION APPROVAL.

TO MY KNOWLEDGE AND BELIEF, THIS MAP IS SUBSTANTIALLY CORRECT AS NOTED HEREON.



*Michael L. Tarbell*  
MICHAEL L. TARBELL

L.S. 15466  
REGISTRATION NO.

12-03-07  
DATE

REVISION	DATE
5-12-10	
3-14-10	
10-12-10	

**"LAKEWOOD ESTATES"**  
NRL LLC  
OPEN SPACE LAYOUT MAP  
PREPARED FOR  
**JAMES GROSSMAN**  
LAKE ROAD, HILLCREST DRIVE, & RTE #85  
HEBRON, CONNECTICUT  
**TARBELL, HEINTZ & ASSOC., INC.**  
CIVIL ENGINEERS - LAND SURVEYORS  
1227 BURNSIDE AVE., SUITE 31 EAST HARTFORD, CT (860) 528-1810

JOB NO.	DATE	SCALE	DRAWN BY	SHEET NO.
1091	12-03-07	1" = 60'	E.M.W.	3H OF 39