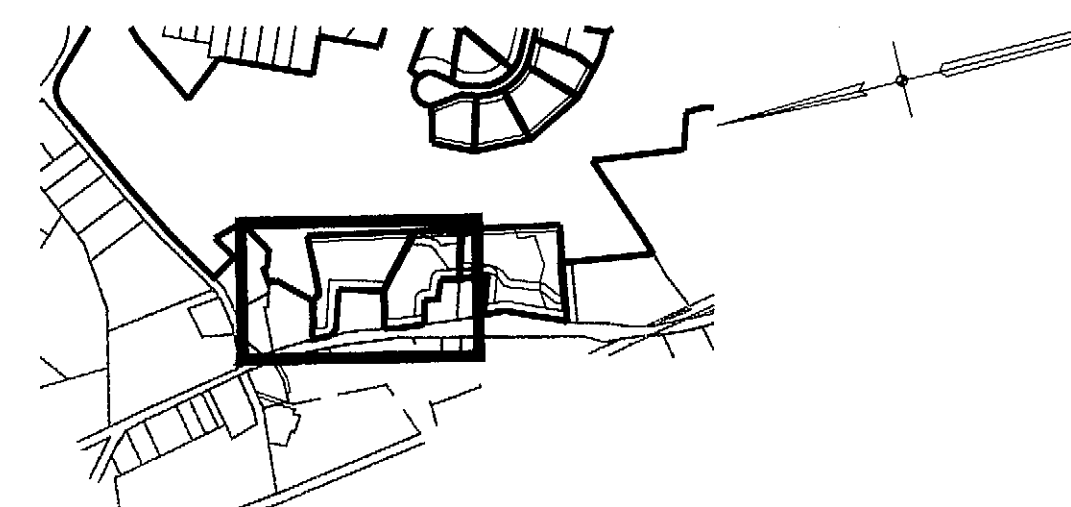


Note: Lots 30, 31, & 32 Shall Have All Roof Leaders Tie Into Infiltrators (Or Approved Equal).

Note: Lots 30, 31, & 32 Shall Have All Roof Leaders Tie Into Infiltrators (Or Approved Equal).

Scale 1" = 40'



Sheet Index Map
1" = 1,000'

Notes:

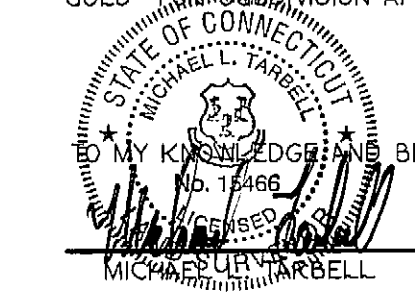
- 1) All Lots Containing Stone Walls To Have 5' Conservation Easements Along Said Walls
- 2) During Periods Of High Rainfall Or Snow Melt, Increase Flows From Footing Drains And Roof Leaders Can Occur And Are Natural Occuring Processes
- 3) Construction Of Common Drive Will Be Responsibility Of Developer And Included On Performance Bond

THE WETLAND SOILS ON THIS SITE WERE IDENTIFIED IN THE FIELD USING THE CRITERIA REQUIRED BY CONN. PUBLIC ACT 72-155, AS AMENDED BY CT. P.A. 73-571, CT. P.A. 87-336, CT. P.A. 87-533. THE BOUNDARIES OF THESE SOILS, AND OF IDENTIFIED WATER COURSES ARE ACCURATELY REPRESENTED ON THIS PLAN.

John P. DeWitt
JOHN P. DEWITT, SOIL SCIENTIST

12/3/07
DATED

NOTE: THIS SURVEY AND MAP HAS BEEN PREPARED IN ACCORDANCE WITH SECTIONS 20-300b-1 THRU 20-300b-20 OF THE REGULATIONS OF CONNECTICUT STATE AGENCIES - "MINIMUM STANDARDS FOR SURVEYS AND MAPS IN THE STATE OF CONNECTICUT" AS ENDORSED BY THE CONNECTICUT ASSOCIATION OF LAND SURVEYORS, INC. IT IS A SUBDIVISION SURVEY BASED ON A DEPENDENT RESURVEY, CONFORMING TO HORIZONTAL ACCURACY CLASS "A-2", VERTICAL ACCURACY CLASS "T-3" AND INTENDED TO BE USED FOR SUBDIVISION APPROVAL.



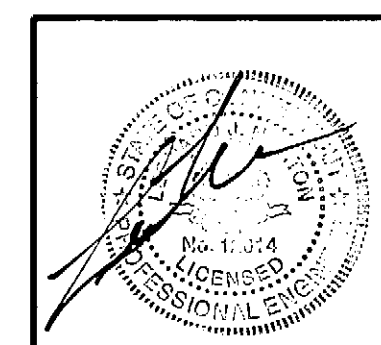
L.S. 15466
REGISTRATION NO.
12-03-07
DATE

See Sheet #3 For Legend

"LAKEWOOD ESTATES"

SITE DEVELOPMENT PLAN
PREPARED FOR
JAMES GROSSMAN
LAKE ROAD, HILLCREST DRIVE, & RTE #85
HEBRON, CONNECTICUT

TARBELL, HEINTZ & ASSOC., INC.
CIVIL ENGINEERS - LAND SURVEYORS
1227 BURNSIDE AVE. SUITE 31, EAST HARTFORD, CT (060) 528-1610



REVISION:
4-6-09
5-12-10
9-14-10
10-12-10

JOB NO.	DATE	SCALE	DRAWN BY	SHEET NO.
1091	12-03-07	1" = 40'	M.L.T./E.M.W.	19 OF 39

THIS MAP PRODUCED BY ORIGINAL INK DRAWING ON POLY FILM
TARBELL, HEINTZ & ASSOC.,
1227 BURNSIDE AVE. SUITE 31
EAST HARTFORD CT 06108